

Α.Σ.Ε. Δούκα **81 - 86** Ν.Ε.Μ.

83%	15 / 18	FT	20 / 24	83%
50%	18 / 36	2FG	21 / 47	45%
45%	10 / 22	3FG	8 / 15	53%
34	24 - 10	Rb	22 - 9	31
	18	Tu	14	

Referees: Θεοδωρόπουλος, Αποστολίδης, Τζιμης

By Quarter	1	2	3	4
Α.Σ.Ε. Δούκα	27	20	18	16
Ν.Ε.Μ.	21	17	24	24

End of Quarter	1	2	3	4
Α.Σ.Ε. Δούκα	27	47	65	81
Ν.Ε.Μ.	21	38	62	86



Α.Σ.Ε. Δούκα

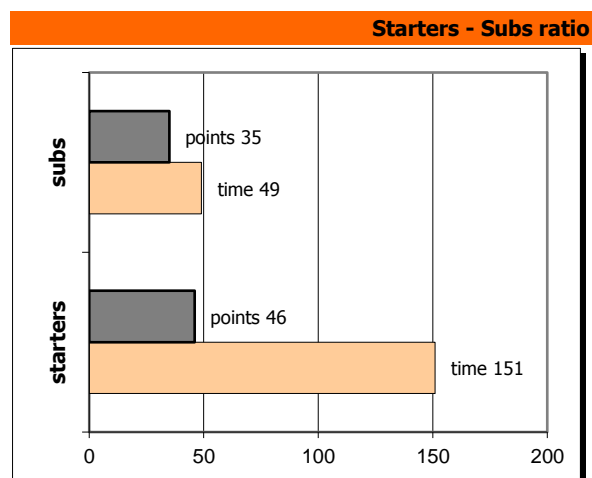
Coach: Κ. Σορώτος, Π. Δημητρίου

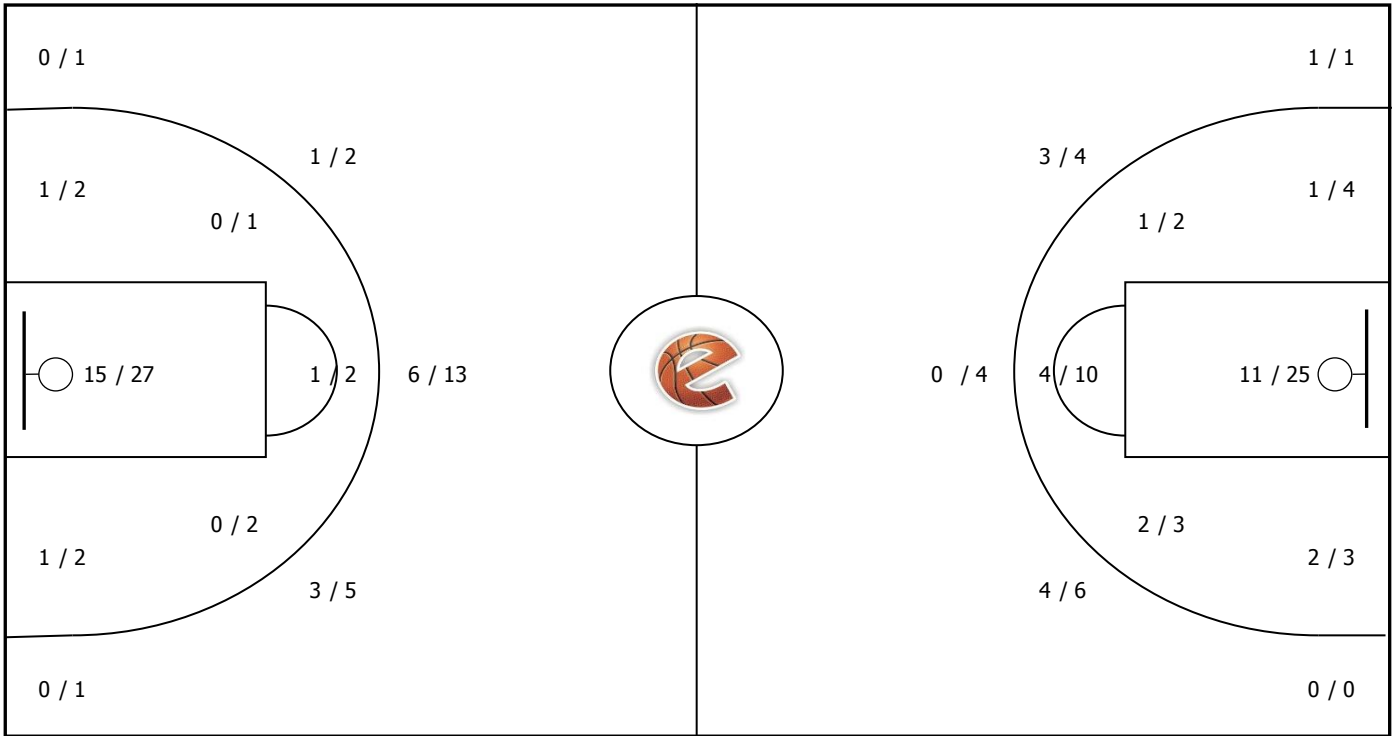
Fastbreaks: 5 / 9

#	Player	Time (min)	Pts	Ft	2Fg	3Fg	+/-	Rbs		As	St	Tu	Bl	Fouls		Eff
								de	of					dr	co	
3	Γαρμπής Κ.	0	0	0 / 0	0 / 0	0 / 0	0	0	0	0	0	0	0	0	0	-
17	Λάκκας Χρ.	30	26	4 / 5	5 / 8	4 / 7	8	2	0	5	2	3	0	3	4	25
19	<b>Ντιαλλό Α.</b>	<b>31</b>	<b>8</b>	<b>2 / 2</b>	<b>3 / 4</b>	<b>0 / 0</b>	<b>1</b>	<b>4</b>	<b>5</b>	<b>3</b>	<b>0</b>	<b>0</b>	<b>3</b>	<b>3</b>	<b>4</b>	<b>22</b>
7	Αναστασόπουλος Ι.	1	0	0 / 0	0 / 0	0 / 0	0	0	0	0	0	0	0	0	0	0
8	Μουλάς Χ.	9	3	0 / 0	0 / 0	1 / 1	-2	2	0	0	0	1	0	0	1	4
9	<b>Μιχαήλ Α.</b>	<b>28</b>	<b>8</b>	<b>3 / 3</b>	<b>1 / 5</b>	<b>1 / 4</b>	<b>-16</b>	<b>3</b>	<b>0</b>	<b>0</b>	<b>0</b>	<b>2</b>	<b>0</b>	<b>4</b>	<b>2</b>	<b>2</b>
10	<b>Κορκόντζελος Κ.</b>	<b>27</b>	<b>5</b>	<b>1 / 2</b>	<b>2 / 5</b>	<b>0 / 1</b>	<b>-3</b>	<b>4</b>	<b>1</b>	<b>2</b>	<b>2</b>	<b>5</b>	<b>0</b>	<b>2</b>	<b>5</b>	<b>4</b>
11	<b>Λαγός Κ.</b>	<b>34</b>	<b>10</b>	<b>2 / 2</b>	<b>4 / 6</b>	<b>0 / 2</b>	<b>-2</b>	<b>2</b>	<b>2</b>	<b>3</b>	<b>1</b>	<b>1</b>	<b>0</b>	<b>2</b>	<b>1</b>	<b>13</b>
12	Μαγουλάς	0	0	0 / 0	0 / 0	0 / 0	0	0	0	0	0	0	0	0	0	-
13	<b>Σωτηράκης Κ.</b>	<b>31</b>	<b>15</b>	<b>3 / 4</b>	<b>3 / 7</b>	<b>2 / 4</b>	<b>-3</b>	<b>5</b>	<b>2</b>	<b>2</b>	<b>2</b>	<b>4</b>	<b>1</b>	<b>3</b>	<b>1</b>	<b>16</b>
14	0	0	0	0 / 0	0 / 0	0 / 0	0	0	0	0	0	0	0	0	0	-
15	Ματζώρης Ν.	9	6	0 / 0	0 / 1	2 / 3	-8	1	0	0	0	0	0	0	4	5
Team								1	0			2		3	0	
1st quarter			27	2 / 3	11 / 14	1 / 2		9	2	8	1	2	3	3	2	43
2nd quarter			20	4 / 4	2 / 10	4 / 8		5	5	3	1	1	0	5	8	21
3rd quarter			18	9 / 11	3 / 4	1 / 4		7	1	1	3	12	0	8	5	12
4th quarter			16	0 / 0	2 / 8	4 / 8		3	2	3	2	3	1	4	7	14
<b>Final Stats</b>		<b>200</b>	<b>81</b>	<b>15 / 18</b>	<b>18 / 36</b>	<b>10 / 22</b>	<b>-25</b>	<b>24</b>	<b>10</b>	<b>15</b>	<b>7</b>	<b>18</b>	<b>4</b>	<b>20</b>	<b>22</b>	<b>90</b>
				<b>83%</b>	<b>50%</b>	<b>45%</b>		<b>34</b>								

Ν.Ε.Μ.

#	Player	Pts	-	3s
3	Παλιοχωρίτης Σ.	4	-	0
5	<b>Γκατζιάς Δ.</b>	<b>10</b>	-	<b>2</b>
6	Γκοντγουν Σ.	0	-	0
7	<b>Αγγελόπουλος Ν.</b>	<b>26</b>	-	<b>2</b>
8	<b>Γερομίχαλος Δ.</b>	<b>15</b>	-	<b>1</b>
91	Εζόμο Κ.	0	-	0
10	<b>Μπέμης Ευ.</b>	<b>6</b>	-	<b>2</b>
11	Νικολακόπουλος Π.	0	-	0
12	Τζαΐδας Π.	4	-	0
13	<b>Καλλινικίδης Α.</b>	<b>11</b>	-	<b>1</b>
14	Χασά Ο.	10	-	0
19	Γκουδαπέρι Β.	0	-	0

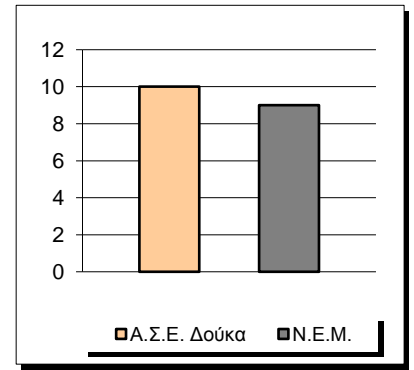
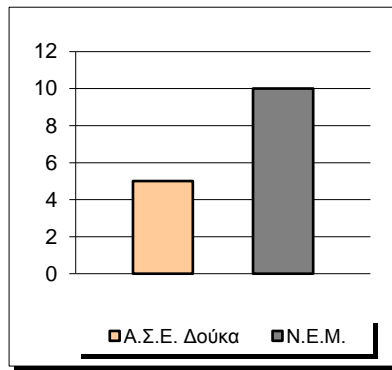
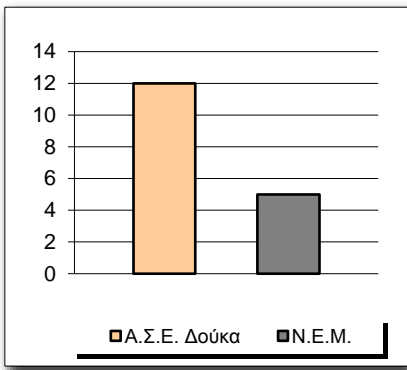




Fastbreak Pts

Turnover Pts

Second Chance Pts

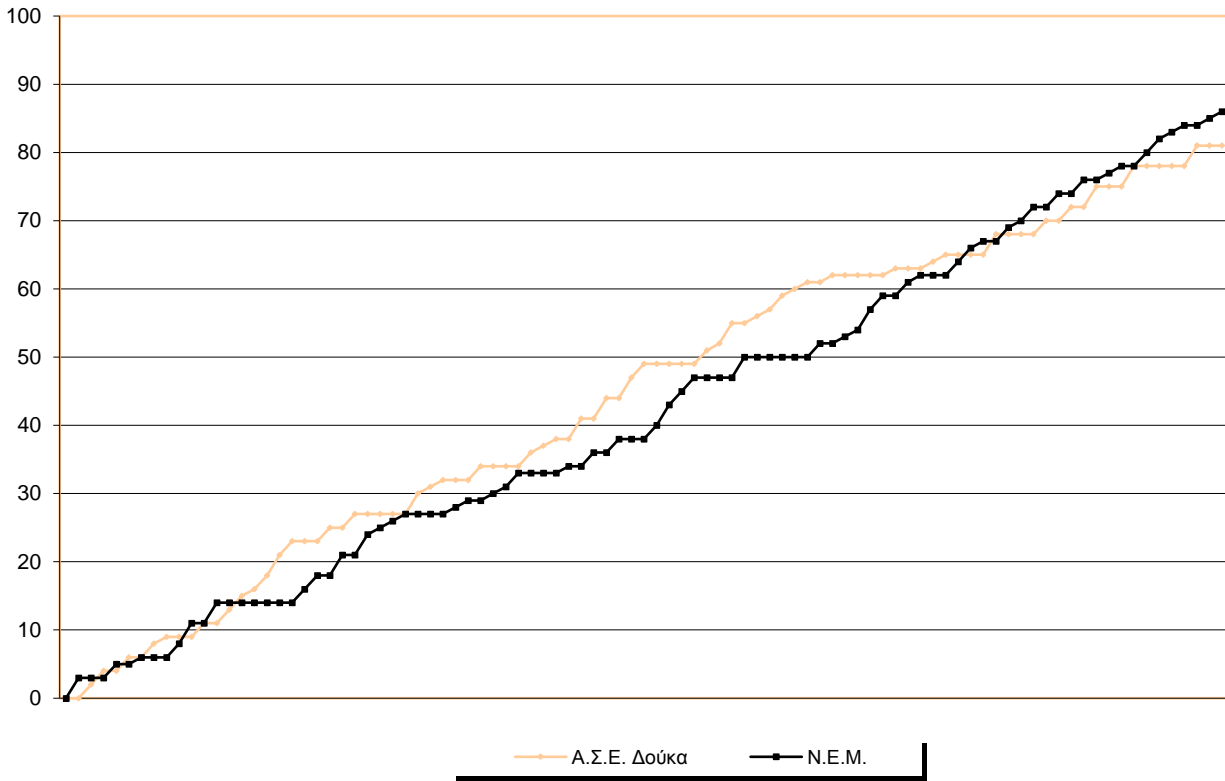


NOTES

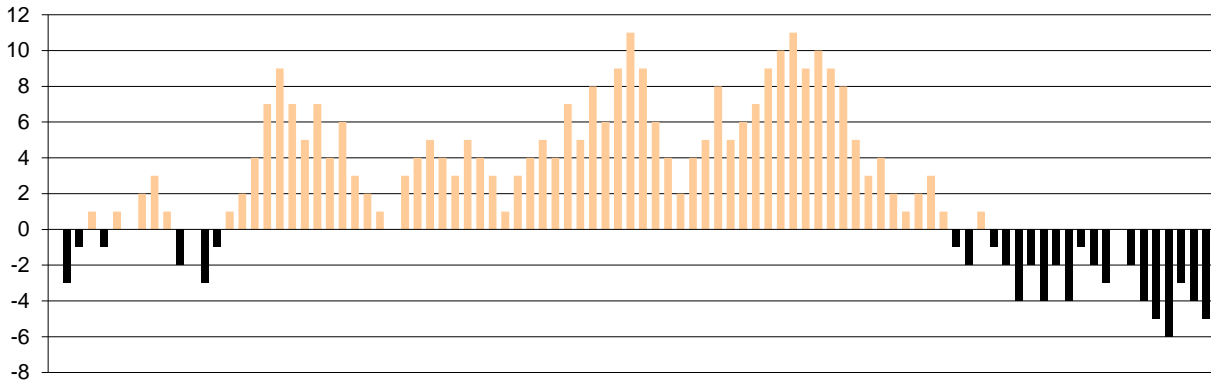
Blank area for notes.

## GRAPHIC STATS

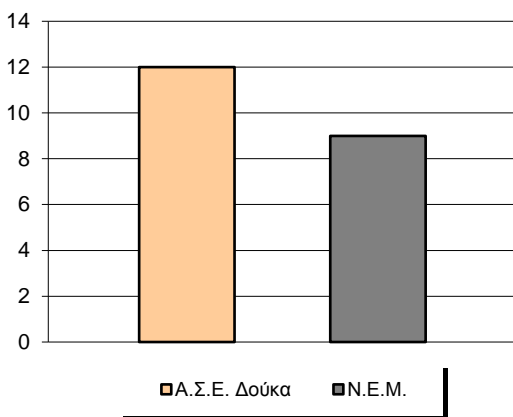
### SCORE EVOLUTION



### SCORE DIFFERENCE



### LARGEST SCORING RUN



### LARGEST LEAD

